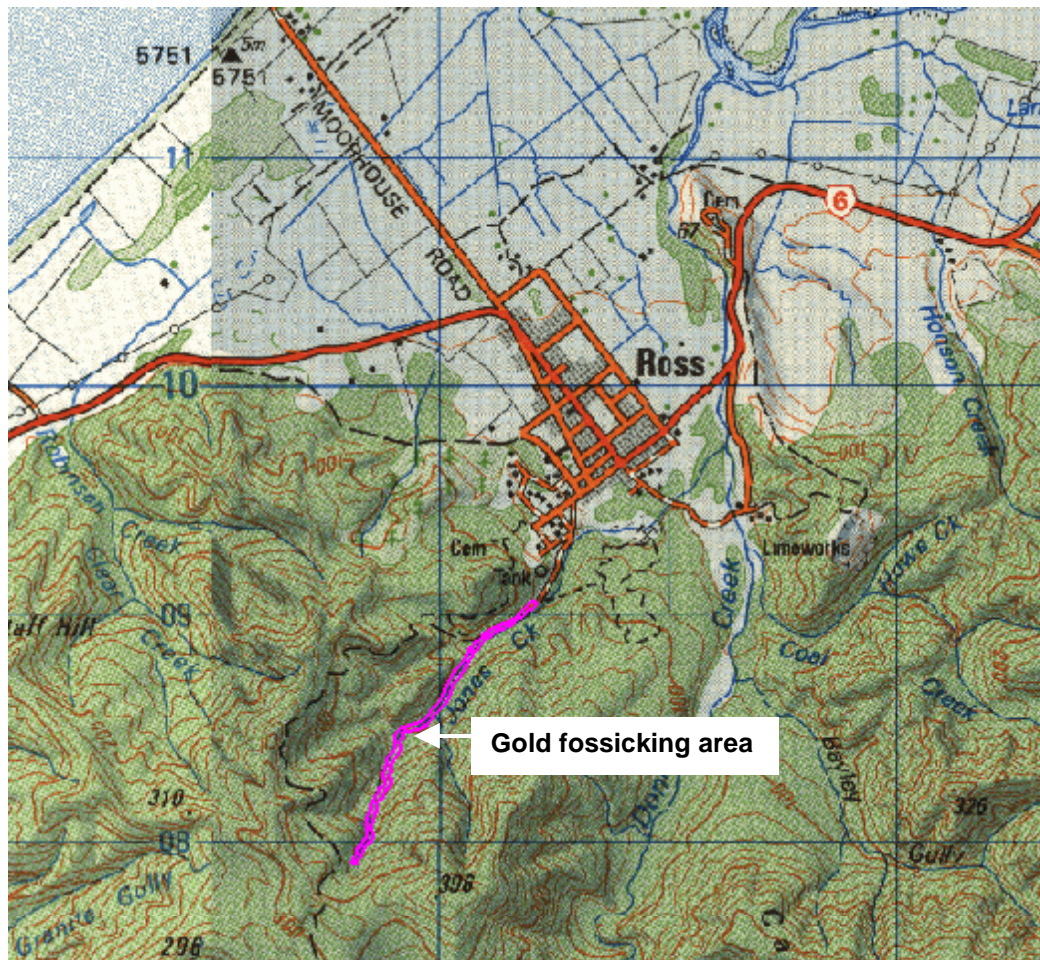


Jones Creek gold fossicking area

Part of Jones Creek (see the map below) has been set aside for recreational gold mining without the need for a mining permit. The area is suitable for gold panning and sluice boxing, and mining is restricted to hand-held non-motorised methods only. Alluvial gold is present although the concentrations are low.

More information is available from the Department of Conservation (Nelson or Hokitika) or from Crown Minerals, Ministry of Economic Development (www.crownminerals.govt.nz).



Scale: Map grid squares are 1 km